

# ONE Minute Brief

2 FEBRUARY 2021

 Economic and Political News

South Africa's (SA) new vehicle sales decline 13.9% YoY in January.

The manufacturing PMI rises to 50.90 in January, compared to 50.30 in December.

President Cyril Ramaphosa eases restrictions, reopens beaches and lifts ban on alcohol sales.



Petrol price to increase by 81 cents and diesel by between 58 and 59 cents from 3 February.



Former President Jacob Zuma defies Constitutional Court order and refuses to appear before the State Capture Commission.



South Africa Market ▲

South African markets closed in the green yesterday, amid gains in shares of Naspers.

To Read More [Click Here](#)

JSE All Share (ZAR)		JSE Top 40 (ZAR)		JSE Africa Fin. (ZAR)	
▲ 62,796.65		▲ 57,670.40		▼ 11,596.75	
1 Day Chg	1 D % Chg	1 Day Chg	1 D % Chg	1 Day Chg	1 D % Chg
324.55	0.52	357.95	0.62	-92.05	-0.79
WTD % Chg.	MTD % Chg.	WTD % Chg.	MTD % Chg.	WTD % Chg.	MTD % Chg.
0.52	0.52	0.62	0.62	-0.79	-0.79
Prev. Month % Chg	YTD % Chg.	Prev. Month % Chg	YTD % Chg.	Prev. Month % Chg	YTD % Chg.
5.16	5.70	5.39	6.05	-3.08	-3.84

US Market ▲

US markets closed firmer yesterday, led by gains in technology and mining sector stocks.

S&P 500 futures ↑

To Read More [Click Here](#)

S&P 500 (USD)		Nasdaq Composite (USD)		DJIA (USD)	
▲ 3,773.86		▲ 13,403.39		▲ 30,211.91	
1 Day Chg	1 D % Chg	1 Day Chg	1 D % Chg	1 Day Chg	1 D % Chg
59.62	1.61	332.70	2.55	229.29	0.76
WTD % Chg.	MTD % Chg.	WTD % Chg.	MTD % Chg.	WTD % Chg.	MTD % Chg.
1.61	1.61	2.55	2.55	0.76	0.76
Prev. Month % Chg	YTD % Chg.	Prev. Month % Chg	YTD % Chg.	Prev. Month % Chg	YTD % Chg.
-1.11	0.47	1.42	4.00	-2.04	-1.29

JSE All Share

Top Gainers

Royal Bafokeng Platinum Ltd	7.7%	-9.4%	Montauk Renewables Inc
Anglo American Platinum Ltd	6.1%	-5.9%	Hammerson Plc
Hudaco Industries Ltd	4.9%	-4.1%	Santam Ltd
Distell Group Holdings Ltd	4.5%	-3.8%	Gold Fields Ltd
Steinhoff International Holdings NV	4.4%	-3.7%	Harmony Gold Mining Co Ltd

Top Losers

Top Gainers

International Flavors & Fragrances Inc	15.8%	-9.6%	DXC Technology Co
Skyworks Solutions Inc	9.8%	-7.9%	DuPont de Nemours Inc
ViacomCBS Inc	7.9%	-4.9%	Lumen Technologies Inc
Xerox Holdings Corp	7.4%	-3.3%	PVH Corp
Qorvo Inc	7.3%	-2.8%	Walgreens Boots Alliance Inc

Top Losers

 UK Market 

UK markets finished higher yesterday, boosted by gains in mining sector stocks.

FTSE 100 futures 

To Read More [Click Here](#)

FTSE 100 (GBP)		DAX 30 (EUR)		CAC 40 (EUR)	
▲ 6,466.42		▲ 13,622.02		▲ 5,461.68	
1 Day Chg	1 D % Chg	1 Day Chg	1 D % Chg	1 Day Chg	1 D % Chg
58.96	0.92	189.15	1.41	62.47	1.16
WTD % Chg.	MTD % Chg.	WTD % Chg.	MTD % Chg.	WTD % Chg.	MTD % Chg.
0.92	0.92	1.41	1.41	1.16	1.16
Prev. Month % Chg	YTD % Chg.	Prev. Month % Chg	YTD % Chg.	Prev. Month % Chg	YTD % Chg.
-0.82	0.09	-2.08	-0.71	-2.74	-1.62

 Asia Market 

Asian markets are trading higher this morning, on renewed hopes for US stimulus. The Nikkei 225 Index is trading 0.9% higher at 28,345.16.

\*As at 6:00 SAST

To Read More [Click Here](#)

Nikkei 225 * (JPY)		Shanghai Composite * (CNY)		Hang Seng * (HKD)	
▲ 28,345.16		▲ 3,524.42		▲ 29,388.58	
1 Day Chg	1 D % Chg	1 Day Chg	1 D % Chg	1 Day Chg	1 D % Chg
254.11	0.90	19.14	0.55	495.72	1.72
WTD % Chg.	MTD % Chg.	WTD % Chg.	MTD % Chg.	WTD % Chg.	MTD % Chg.
1.55	1.55	0.64	0.64	2.15	2.15
Prev. Month % Chg	YTD % Chg.	Prev. Month % Chg	YTD % Chg.	Prev. Month % Chg	YTD % Chg.
0.80	2.36	0.29	0.93	3.87	6.10

FTSE 100

 Top Gainers

Fresnillo Plc	9.0%	-5.6%	Pearson Plc
JD Sports Fashion Plc	7.0%	-4.5%	Hargreaves Lansdown Plc
Polymetal In	5.1%	-1.9%	British Land Co Plc
London Stock Exchange Group Plc	4.8%	-1.6%	BP Plc
M&G Plc	4.0%	-1.6%	Royal Dutch Shell Plc-Class A









Top Losers 

 Top Gainers





Shiseido Co Ltd	6.9%	-3.8%	Tokyo Electric Power Co Holdings Inc
Hitachi Zosen Corp	6.0%	-2.7%	Kyowa Hakko Kirin Co Ltd
Mitsubishi Materials Corp	5.9%	-2.2%	Daiwa Securities Group Inc
NTN Corp	5.5%	-2.1%	Yamato Holdings Co Ltd
Denso Corp	5.5%	-2.1%	Shionogi & Co Ltd

Top Losers 

 Currencies

<div><div><div>USD</div><div></div></div><div><div> ZAR</div><div>15.0275</div></div><div>▼ -0.28%</div></div> <div>At 06:00 SAST, the US Dollar retreated against the South African Rand. The US Dollar fell against the South African Rand yesterday.</div>	<div><div><div>GBP</div><div></div></div><div><div> ZAR</div><div>20.5735</div></div><div>▼ -0.06%</div></div> <div>At 06:00 SAST, the British Pound is trading weaker against the South African Rand. The British Pound declined against the South African Rand yesterday.</div>	<div><div><div>EUR</div><div></div></div><div><div> ZAR</div><div>18.1552</div></div><div>▼ -0.13%</div></div> <div>At 06:00 SAST, the Euro fell against the South African Rand. The Euro weakened against the South African Rand yesterday.</div>	<div><div><div>AUD</div><div></div></div><div><div> ZAR</div><div>11.4631</div></div><div>▼ -0.18%</div></div> <div>At 06:00 SAST, the Australian Dollar is trading lower against the South African Rand. The Australian Dollar dropped against the South African Rand yesterday.</div>
---	---	--	---

 Commodities

<div><div></div><div>▲ 0.92%</div><div>Brent (\$/barrel)</div><div>56.87</div></div> <div>At 06:00 SAST, Brent crude oil rose. Yesterday, Brent crude oil climbed, amid drop in crude inventories and rising winter fuel demand.</div> <div>To Read More <a href="#">Click Here</a></div>	<div><div></div><div>▼ -0.12%</div><div>Gold (\$/oz)</div><div>1,858.60</div></div> <div>At 06:00 SAST, gold prices edged lower. Yesterday, gold prices rose.</div>	<div><div></div><div>▼ -1.19%</div><div>Platinum (\$/oz)</div><div>1,125.30</div></div> <div>At 06:00 SAST, platinum prices declined. Yesterday, platinum prices advanced.</div>	<div><div></div><div>Copper (\$/MT)*</div><div>7,805.55</div></div> <div>Yesterday, copper prices have fallen. * As of previous close</div>
--	---	--	---

## Major South African Corporate News

No News

## Major Global Economic News



### US

The ISM manufacturing index declined in January.

The Markit manufacturing PMI rose in January.

Construction spending increased in December.



### Eurozone

Eurozone's unemployment rate remained unchanged in December.

Eurozone's Markit manufacturing PMI dropped in January.

Germany's manufacturing PMI fell in January.



### Asia

The Reserve Bank of Australia kept its key interest rate unchanged at 0.10%.















### UK

Mortgage approvals fell in December but remained close to a 13 year-high.

Net consumer credit fell less than expected in December.

The Markit manufacturing PMI fell to a three-month low in January.

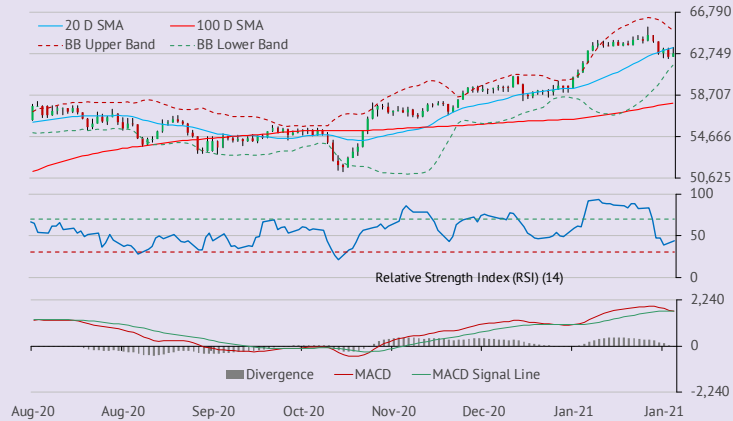
 Economic Calendar

Country	SAST	Economic Indicator	Relevance	Consensus	Previous	Frequency
 UK	09:00	Nationwide House Prices n.s.a. (YoY) (Jan)	★	6.80%	7.30%	Monthly
 UK	09:00	Nationwide House Prices s.a. (MoM) (Jan)	★	0.20%	0.80%	Monthly
 France	09:45	Consumer Price Index (EU norm) (YoY) (Jan) (P)	★★★	0.40%	0.00%	Monthly
 France	09:45	Consumer Price Index (YoY) (Jan) (P)	★★★	0.30%	0.00%	Monthly
 Spain	10:00	Unemployment Change (Jan)	★★★	-	36.80K	Monthly
 Eurozone	11:00	ECB's Fernandez-Bollo Speech	★	-	-	As Scheduled
 Italy	11:00	Gross Domestic Product s.a. (QoQ) (Q4) (P)	★★★	-2.10%	15.90%	Quarterly
 Italy	11:00	Gross Domestic Product s.a. (YoY) (Q4) (P)	★★	-6.70%	-5.00%	Quarterly
 Portugal	11:30	Gross Domestic Product (QoQ) (Q4) (P)	★	-	13.30%	Quarterly
 Portugal	11:30	Gross Domestic Product (YoY) (Q4) (P)	★	-	-5.70%	Quarterly
 Eurozone	12:00	Gross Domestic Product s.a. (QoQ) (Q4) (F)	★★★	-1.20%	12.50%	Quarterly
 Eurozone	12:00	Gross Domestic Product s.a. (YoY) (Q4) (F)	★★	-5.40%	-4.30%	Quarterly

Note: ★★★ High   ★★ Medium   ★ Low

**Technical snapshot**

**JSE All Share**



62,796.65

**R1**

64,151.41

**R2**

65,506.17

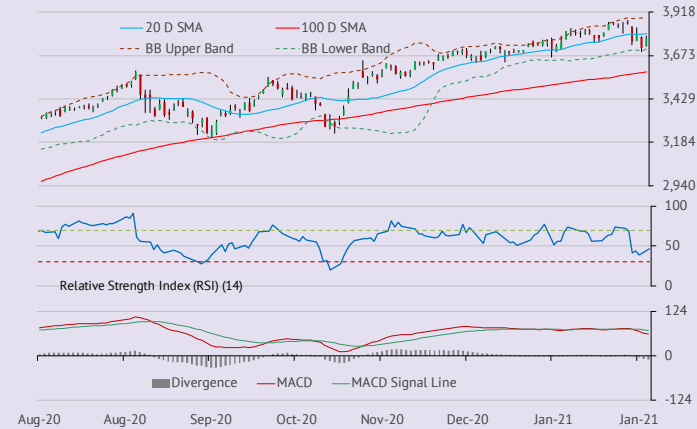
**S1**

61,850.33

**S2**

60,904.01

**S&P 500**



3,773.86

**R1**

3,865.13

**R2**

3,956.41

**S1**

3,688.35

**S2**

3,602.85

**USD ZAR**



15.0694

**R1**

15.3146

**R2**

15.5598

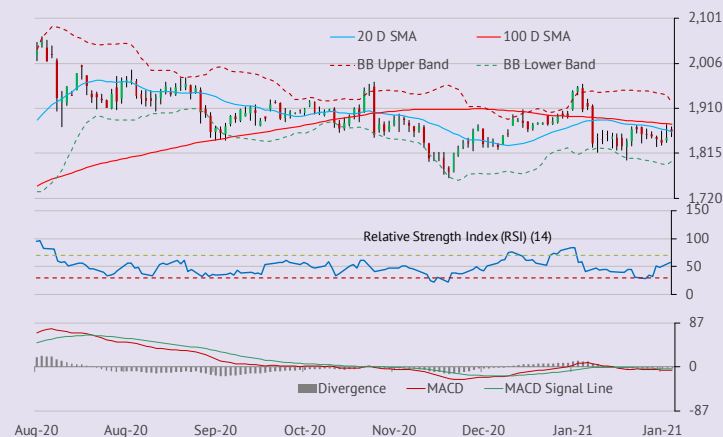
**S1**

14.8888

**S2**

14.7082

**XAU USD**



\$1,860.80/oz

**R1**

\$1,881.73/oz

**R2**

\$1,902.67/oz

**S1**

\$1,834.13/oz

**S2**

\$1,807.47/oz

Disclaimer

This report and its contents are confidential, privileged and only for the information of the intended recipient. GTC (Pty) Ltd make no representations or warranties in respect of this report or its content and will not be liable for any loss or damage of any nature arising from this report, the content thereof, your reliance thereon its unauthorised use or any electronic viruses associated therewith. Please note that content does not necessarily represent or reflect the views and opinions of GTC (Pty) Ltd. This report is proprietary to GTC (Pty) Ltd and you may not copy or distribute the report without the prior written consent of the authors. Any feedback or contributions are most welcome.

formerly Grant Thornton Capital

**a** GTC, The Wanderers Office Park,  
52 Corlett Drive, Illovo, 2196

**p** P O Box 55118, Illovo, 2116

**t** +27 (0) 10 597 6800

**f** +27 (0) 10 597 6801

**w** [www.gtc.co.za](http://www.gtc.co.za)

GTC (Pty) Ltd.

**reg. no.** 1996/001488/07

**directors:** G.K. Mockler, F.Dildar

An Authorised Financial  
Services Provider

**FSP no.** 731

**GTC is nationally represented in Johannesburg, Cape Town and Durban.**

**GTC Group of products and services include:** Employee Benefits Consulting • Employee Benefits Administration • Private Client Wealth Management • Healthcare Consulting • Short-Term Risk Solutions • Stockbroking • Derivatives Trading • Unit Trust Management • Asset Management • Fiduciary Services